



RELEASE AND UNWIND

Miami

24777 SW 87th Avenue
Miami, FL 33032



GUEST INFORMATION

Scan this QR code to view
the Guest Information Packet online



Toll Free: 1-888-LOGGER2

Direct: 305-258-3500 | Fax: 305-258-4812



RELEASE AND UNWIND

Directions to Loggerhead Club & Marina® – Miami

By Water: (VHF Channel # 16)

- 🐢 You can access Loggerhead Club & Marina - Miami by water via the Biscayne National Park at GPS coordinates: 25 31.2539 north latitude 80 17.925 longitude.

By Land:

- 🐢 From the Florida Turnpike: Go south to SW 112th Avenue (exit 9B). Proceed to SW 248th Street. Turn right onto 248th Street and go straight to Black Point Park. Upon entering the park, follow the signs marked "Ramp." Loggerhead Club & Marina - Miami is located due east (on the right) of the Black Point Park boat ramp.
- 🐢 From U.S. 1: Go south to SW 216th Street. Turn left onto SW 216th Street and proceed to 87th Avenue, then turn right. Go straight into Black Point Park. Again, follow the signs marked "Ramp." Loggerhead Club & Marina - Miami is located due east (on the right) of the Black Point Park boat ramp.

Marina Information

Dock/Rack Layout

- 🐢 Dry storage for up to 300 boats up to 35' in length. There is no wet storage at this Loggerhead Marina location. A limited number of transient slips are available (no utilities).

Marine Fuel

- 🐢 The Miami Loggerhead Club & Marina location sells ValvTect 90 octane marine-specific non-ethanol gasoline and diesel. We also offer our members a discount on fuel.

On- Site Utilities

- 🐢 Pump-out service is available on site.


Marina Depth

- 🐢 At low tide the approach to the marina is 4.8 feet. Once inside the marina the depth is 8 to 12 feet




RELEASE AND UNWIND

In the Event of an After-Hours Emergency

 The marina office phones are forwarded nightly to an answering service. The service will contact the harbormaster or another Loggerhead Club & Marina official in the event of an emergency. If the incident involves an injury or the law is being broken, please dial 911. A call to the marina office will also be appreciated.

Local Fixed Bridges

 To the north of the marina, the nearest fixed bridge is the Rickenbacker Causeway (76 feet at center).

In the Area:

Airports

Miami International Airport	N.W. 20th Street & Lejune Road, Miami, FL	(305) 871-4100
Ft. Lauderdale International Airport	100 Aviation Blvd, Fort Lauderdale, FL	(954) 359-1200

Bait & Tackle

Bite Me Bait Shack	24655 SW 112th Ave # 112, Homestead, FL	(305) 257-1117
F & F Bait & Tackle	17846 S Dixie Hwy, Miami, FL	(305) 259-0247

Banks

Bank of America	20501 Old Cutler Rd, Cutler Bay, FL	(305) 233-8340
Suntrust Bank	20295 S Dixie Hwy, Cutler Bay, FL	(305) 255-0912

Drugstores

CVS	20345 Old Cutler Rd, Cutler Bay, FL	(305) 232-9130
Kmart Pharmacy	20505 S Dixie Hwy, Miami, FL	(305) 254-2528



RELEASE AND UNWIND

Entertainment

Movies at the Falls	8888 SW 136th St, Miami, FL	(305) 255-5200
Vizcaya Mansion and Gardens	3251 S Miami Ave, Miami, FL	(305) 250-9133
The Barnacle St. Park	3485 Main Hwy, Coconut Grove, FL	(305) 442-6866
Fairchild Tropical Gardens	10901 Old Cutler Rd, Miami, FL	(305) 667-1651

Golf and Tennis

Palmetto Golf Course	9300 SW 152nd St, Palmetto Bay, FL	(305) 238-2922
Killian Greens Golf Club	9980 SW 104th St, Miami, FL 33176	(305) 271-0917

Grocery Stores

Publix	20711 S Dixie Hwy, Miami, FL	(305) 256-3140
--------	------------------------------	----------------

Health Care

Homestead Hospital	975 Baptist Way, Homestead, FL	(786) 243-8000
South Miami Hospital	6200 SW 73rd St, South Miami, FL	(786) 662-4000

Health Clubs

LA Fitness	16051 S Dixie Hwy Ste C, Miami, FL	(305) 232-6778
------------	------------------------------------	----------------

Hotels

La Qunita Inn & Suites	10821 Caribbean Blvd, Miami, FL	(305) 278-0001
------------------------	---------------------------------	----------------

Liquor Stores

Red Rooster Liquor Store	20700 S Dixie Hwy, Miami, FL	(305) 253-6298
Hills Liquors	26606 S Dixie Hwy, Homestead, FL	(305) 258-2436

Toll Free: 1-888-LOGGER2

Direct: 305-258-3500 | Fax: 305-258-4812



RELEASE AND UNWIND

Mail & Shipping

US Post Office	13500 SW 250th St, Princeton, FL	(305) 258-9462
FedEx Office	18755 S Dixie Hwy # 57, Cutler Bay, FL	(305) 235-2911

Marine Sales

Exclusive Yacht Group	140 Intracoastal Pointe Drive, Ste 110, Jupiter, FL	(561) 745-2780
Sunrise Harbor Yacht Sales	9360 SW 72nd St, Miami, FL	(305) 275 0169

Marine Services

Sea Tow Miami		(305) 673 2869
Sea Tow Key Largo		(305) 451 3330
Sea Tow Key Biscayne	Working channel 16, 06, 18	(786) 314-5444
Eric's Outboard Marine Service, Inc.	8755 SW 129th St, Homestead, FL	305-251-4067
Boat Works	1116 N. Flagler Ave, Homestead, FL 33030	305-246-1656

Restaurants

Black Point Ocean Grill	On Site	(305) 258-3918
Irish Tavern & Grill South	9821 SW 184th Street, Palmetto Bay, FL	(305) 256 4560
Buffalo Wild Wings	20505 S. Dixie Hwy #555, Miami, FL	(305) 238 8850
Rumors "A Neighborhood Bistro & Grill"	20537 Old Cutler Rd, Miami, FL	(786) 242 7774

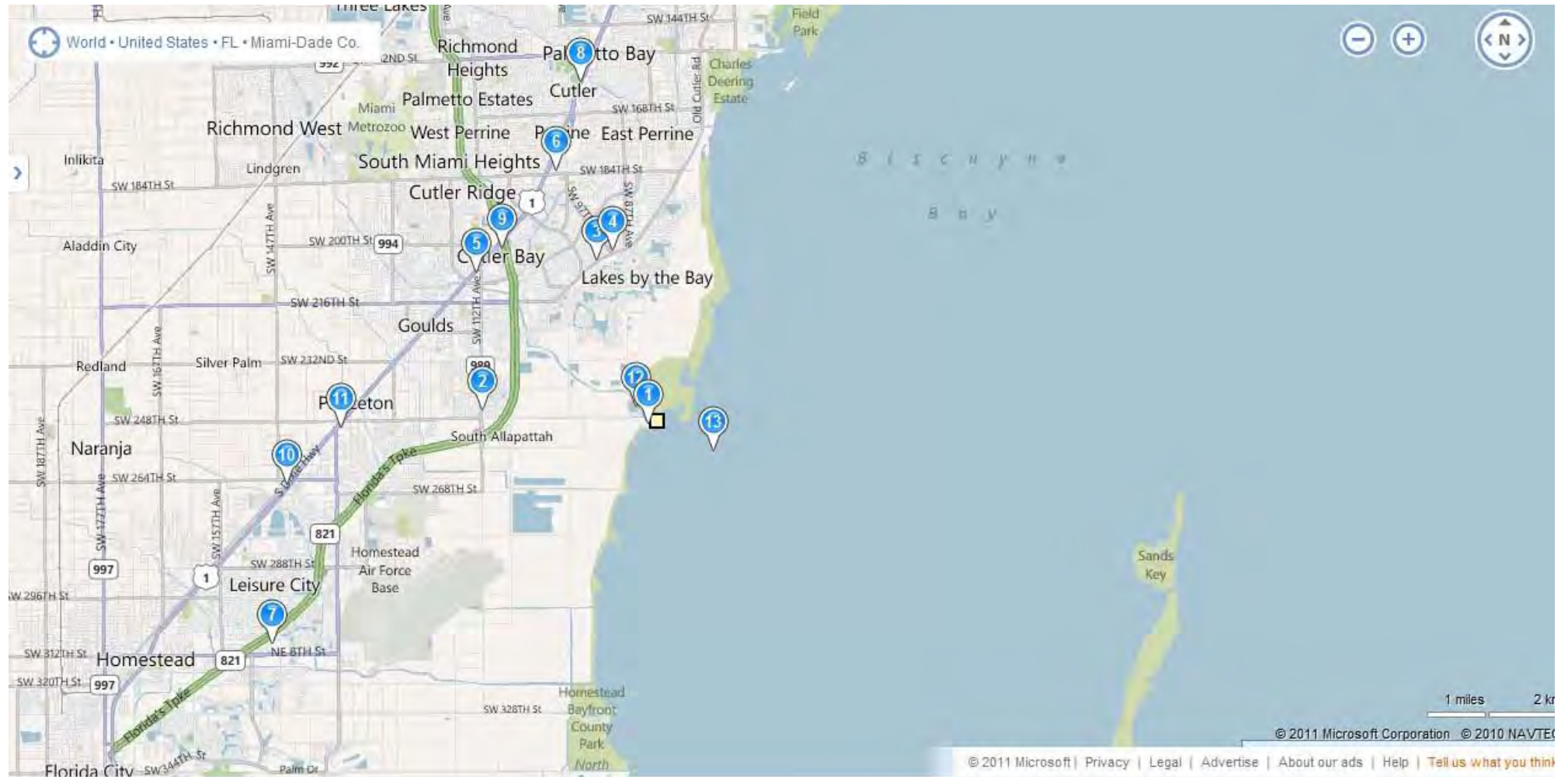
Transportation Services

Cutler Ridge Area Taxi	13964 SW 90th Ave, Miami, FL	(305) 256-4444
Skylite Limousines	10776 SW 188th St, Cutler Bay, FL	(305) 987-8728
Key Biscayne Bike Rental	260 Crandon Blvd, Key Biscayne, FL	(305) 361-5555

US Customs & Immigration

US Immigration and Customs Enforcement – Ft. Lauderdale	1800 Eller Drive Suite 104, Fort Lauderdale, FL	(954) 761-2000
US Immigration and Customs Enforcement – Miami Seaport	903 South America Way Miami, FL	(305) 536-4758 Ext: 213

Miami Area Map



1. Loggerhead Club & Marina Miami

2. Bite Me Bait Shack

24655 SW 112th Ave # 112, Homestead, FL

3. Bank of America

20501 Old Cutler Rd, Cutler Bay, FL

4. CVS Pharmacy

20345 Old Cutler Rd, Cutler Bay, FL

5. Publix

20711 S Dixie Hwy, Miami, FL

6. Irish Tavern & Grill South

9821 SW 184th St, Palmetto Bay, FL

7. Homestead Hospital

975 Baptist Way, Homestead, FL

8. LA Fitness

16051 S Dixie Hwy Ste C, Miami, FL

9. La Quinta Inn & Suites Miami Cutler Ridge

10821 Caribbean Blvd, Miami, FL

10. Hills Liquors Inc

26606 S Dixie Hwy, Homestead, FL

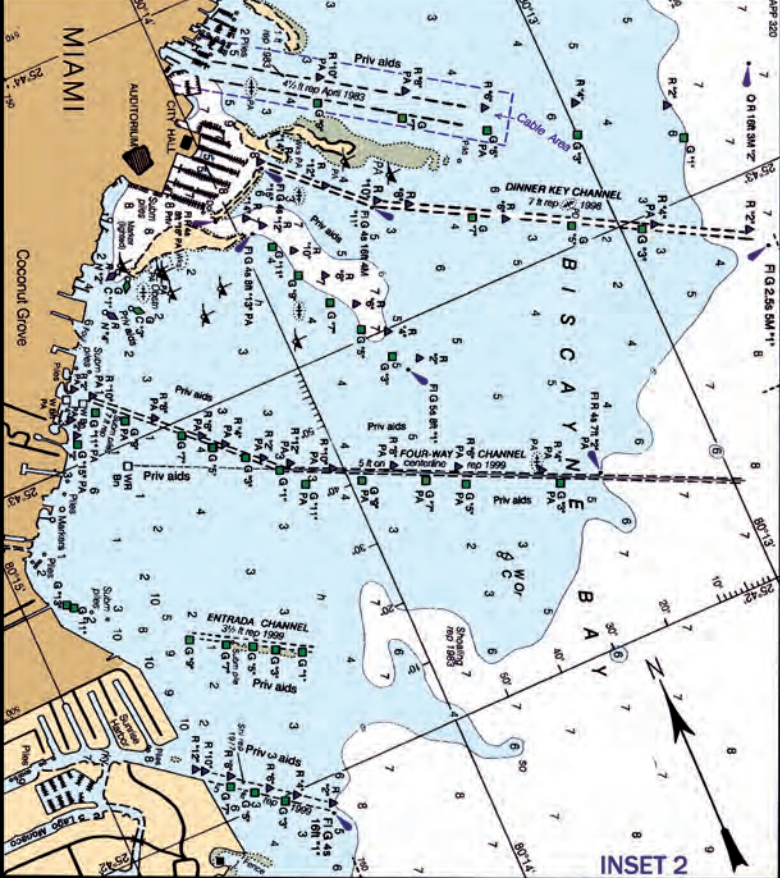
11. US Post Office

13500 SW 250th St, Princeton, FL

12. Black Point Ocean Grill

24775 SW 87th Ave, Homestead, FL

13. Channel Entrance N 25° 31.5 W 80° 17.9



SOUNDINGS IN FEET AT MEAN LOWER LOW WATER

NOTE L PRECAUTIONARY AREA
A Precautionary Area exists around Miami Lighted Buoy "M". Large commercial ships inbound and outbound of the port will board and disembark pilots within this area and will be severely limited in their ability to maneuver. All vessels are advised to exercise extreme care in navigating within this area.

NOTE A
Navigation regulations are published in Chapter 2, U.S. Coast Pilots 4 and 5. Additions or revisions to Chapter 2 are published in the Notice to Mariners. Information concerning the regulations may be obtained at the Office of the Commander, 7th Coast Guard District in Miami, Florida, or at the Office of the District Engineer, Corps of Engineers in Jacksonville, Florida. Refer to charted regulation section numbers.

NOTE B
The aids are private and positions are approximate.

NOTE C
HOTEL TOWER
Coral Gables

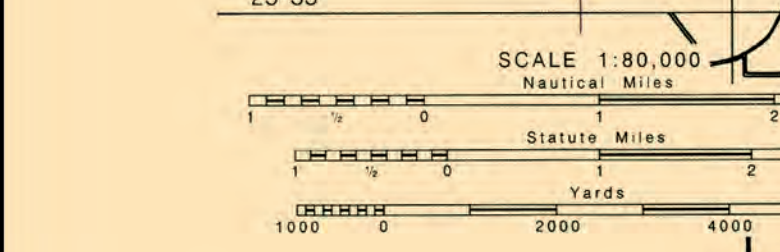
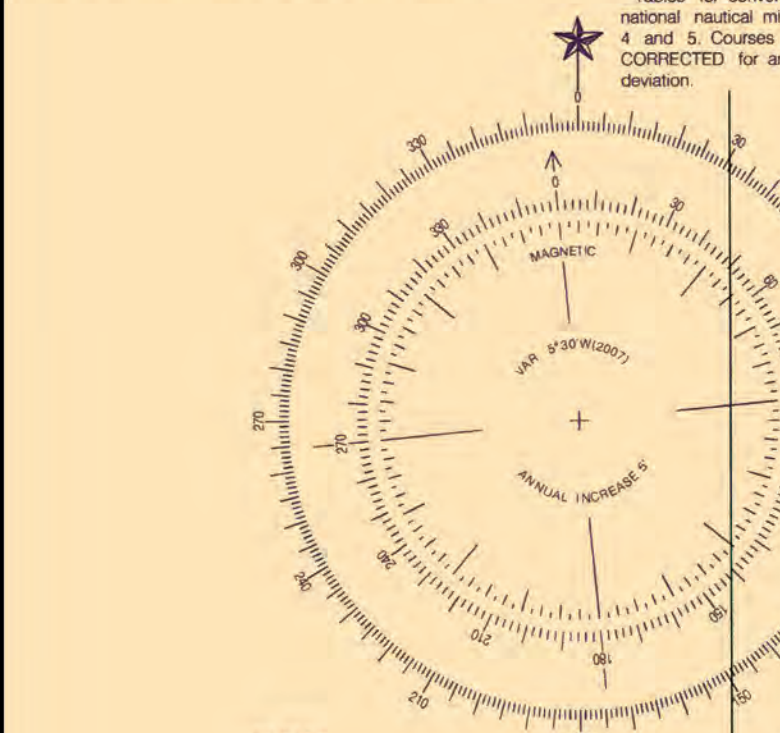
WARNING
The prudent mariner will not rely solely on any single aid to navigation, particularly on floating aids. See U.S. Coast Guard Light List and U.S. Coast Pilot for details.

AIDS TO NAVIGATION
Consult U.S. Coast Guard Light List for supplemental information concerning aids to navigation.

INTRACOASTAL WATERWAY
Project Depths
12 feet Norfolk, VA to Fort Pierce FL, 10 feet Fort Pierce, FL to Miami FL, 7 feet Miami, FL to Cross Bank, Florida Bay.
The controlling depths are published periodically in the U.S. Coast Guard Local Notice to Mariners.
Additional information can be obtained at nauticalcharts.noaa.gov

Distances
The waterway and suggested routes from Key West leading to the Intracoastal Waterway in Florida Bay are indicated by magenta lines. Mileage distances shown along the waterway and routes are in statute miles, southward from Norfolk, Virginia and indicated thus:
Tables for converting statute miles to International nautical miles are given in Coast Pilots 4 and 5. Courses are TRUE and must be CORRECTED for any variation and compass deviation.

DISCLAIMER
This chart is published and distributed by U.S. Chart Services, Inc. U.S. Chart Services, Inc. has copied, cropped and edited data from OceanGrafix charts to produce this chart. Some of the copied data is copyright protected by OceanGrafix and is used with permission. OceanGrafix makes no claims that the copied data is accurate or suitable for the intended use of the recipient or purchaser and offers no warranty concerning the chart's fitness for use. The data contained in this chart may not be reproduced in any form without written permission from U.S. Chart Services, Inc. and OceanGrafix. OceanGrafix, U.S. Chart Services, Inc., as well as advertisers and distributors of this product can not be responsible for any errors or omissions which may occur in the printing of this imaged product. All persons using this product are CAUTIONED to use the practices of good seamanship and consult Notice to Mariners when using this information.

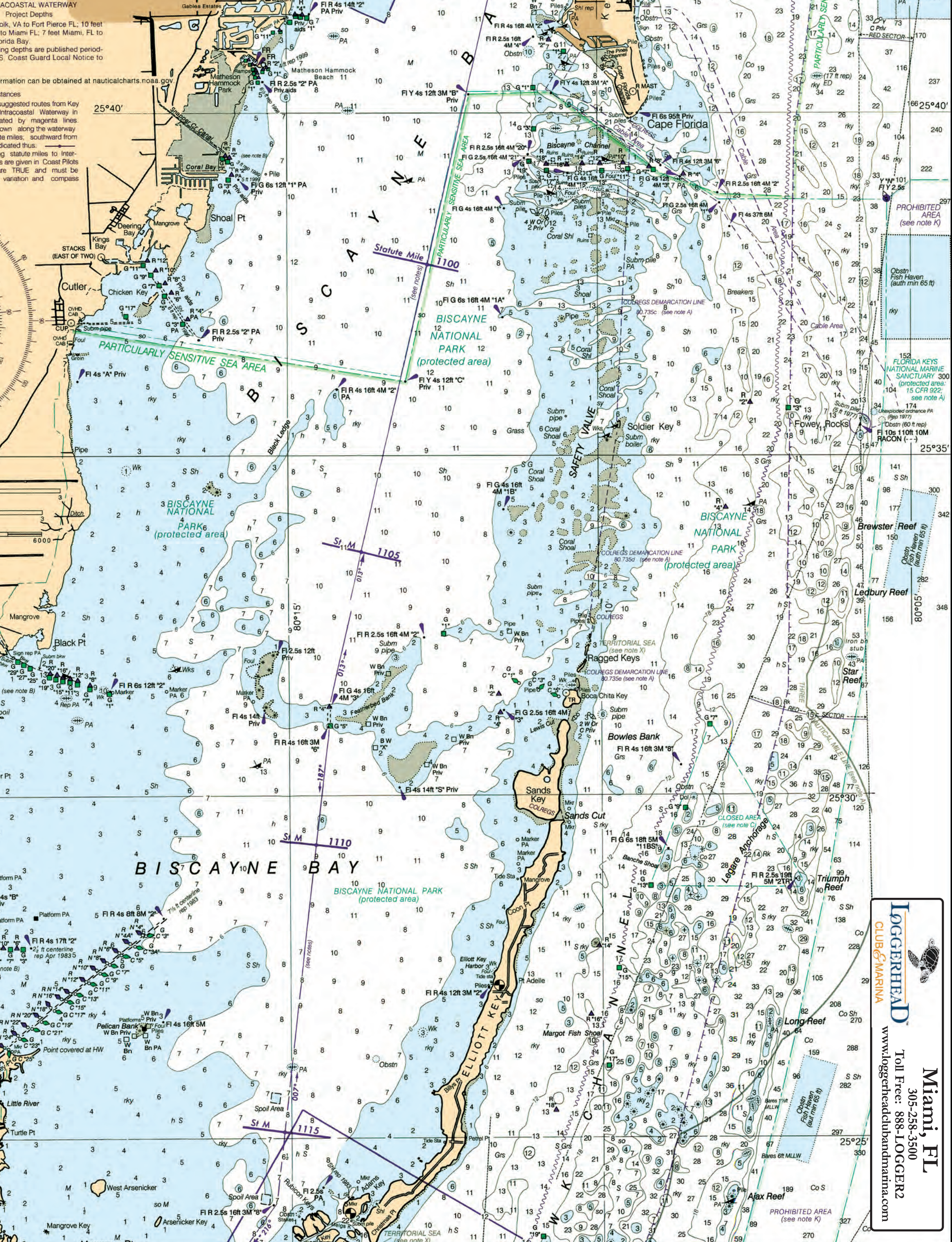


INTRACOASTAL WATERWAY AIDS
The U.S. Aids to Navigation System is designed for use with nautical charts, and the exact meaning of an aid to navigation may not be clear unless the appropriate chart is consulted.
Aids to navigation marking the Intracoastal Waterway exhibit unique yellow symbols to distinguish them from aids marking other waterways.
When following the Intracoastal Waterway southward from Norfolk, VA to Cross Bank in Florida Bay, aids with yellow triangles should be kept on the starboard side of the vessel and aids with yellow squares should be kept on the port side of the vessel.
A horizontal yellow band provides no lateral information, but simply identifies aids to navigation as marking the Intracoastal Waterway.

SUPPLEMENTAL INFORMATION
Consult U.S. Coast Pilot 4 & 5 for important supplemental information.

AERO Rot W & G

HURRICANES AND TROPICAL STORMS
Hurricanes, tropical storms and other major storms may cause considerable damage to marine structures, aids to navigation and moored vessels, resulting in submerged debris in unknown locations. Charted soundings, channel depths and shoreline may not reflect actual conditions following these storms. Fixed aids to navigation may have been damaged or destroyed. Buoys may have been moved from their charted positions, damaged, sunk, extinguished or otherwise made inoperative. Mariners should not rely upon the position or operation of an aid to navigation. Wrecks and submerged obstructions may have been displaced from charted locations. Pipelines may have become uncovered or moved.
Mariners are urged to exercise extreme caution and are requested to report aids to navigation discrepancies and hazards to navigation to the nearest United States Coast Guard unit.



LOGGERSHEAD CLUB & MARINA
www.loggersheadclubandmarina.com
Miami, FL
305-258-3300
Toll Free: 888-1-LOGGER2